

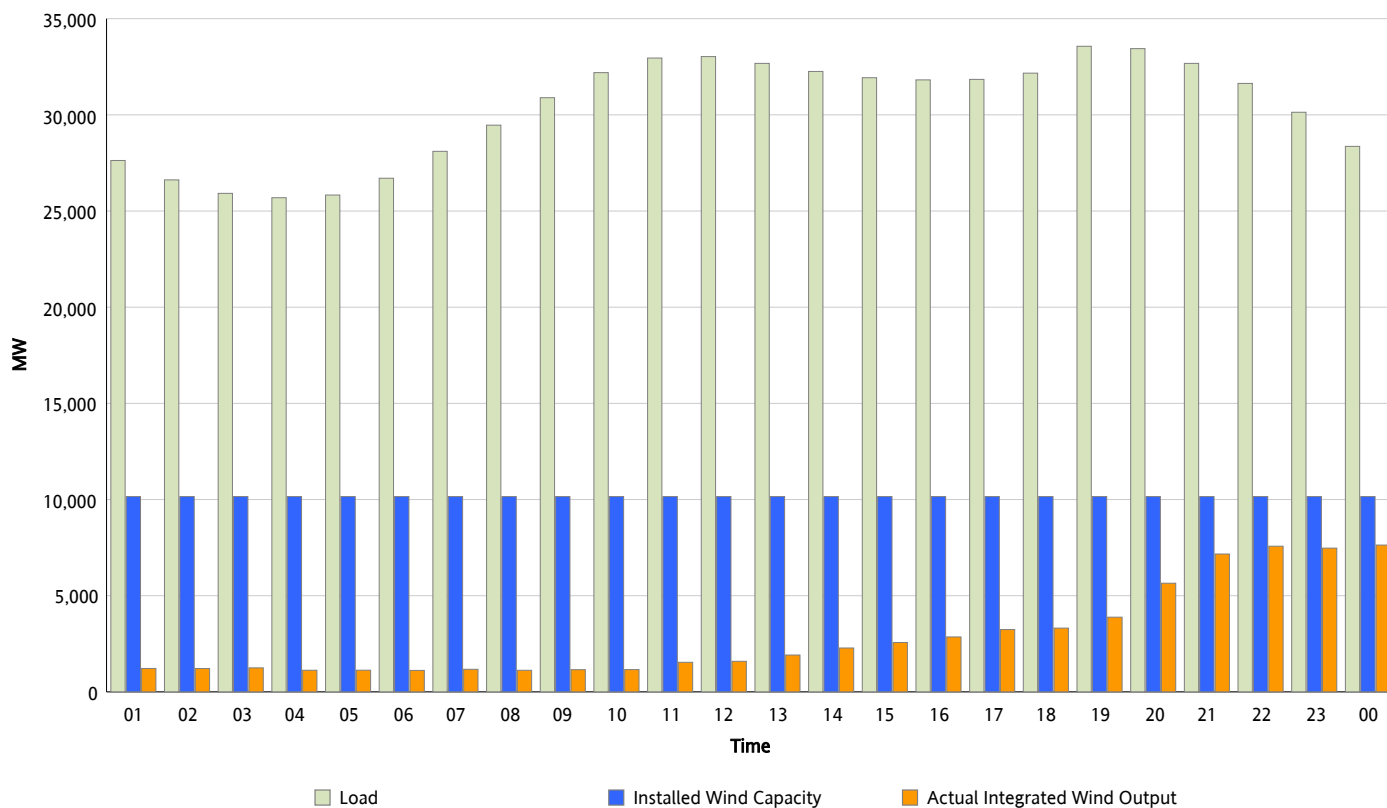


## ERCOT Grid Operations

### Wind Integration Report : 01/26/2013

Peak Load	33,568 MW
Load Peak Hour (HE)	19
Wind Over Peak	3,883 MW
Wind Record 12/25/12	8,638 MW
Max Wind Value*	7,901 MW
Wind Peak Time	23:59
Wind Integration %	28.64 %

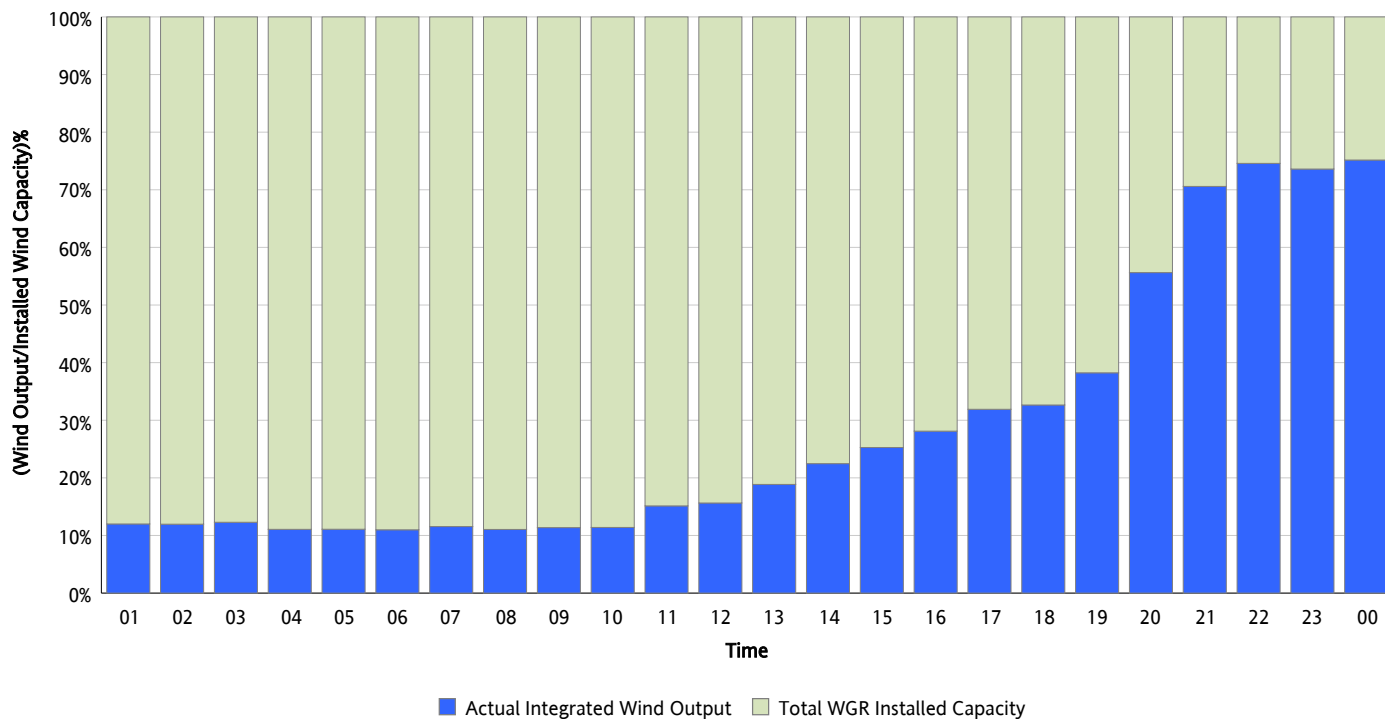
**Hourly Average Actual Load vs. Actual Wind Output**  
01/26/2013



\* Wind Record and Wind Max represent instantaneous values and the rest of the values are integrated over the hour

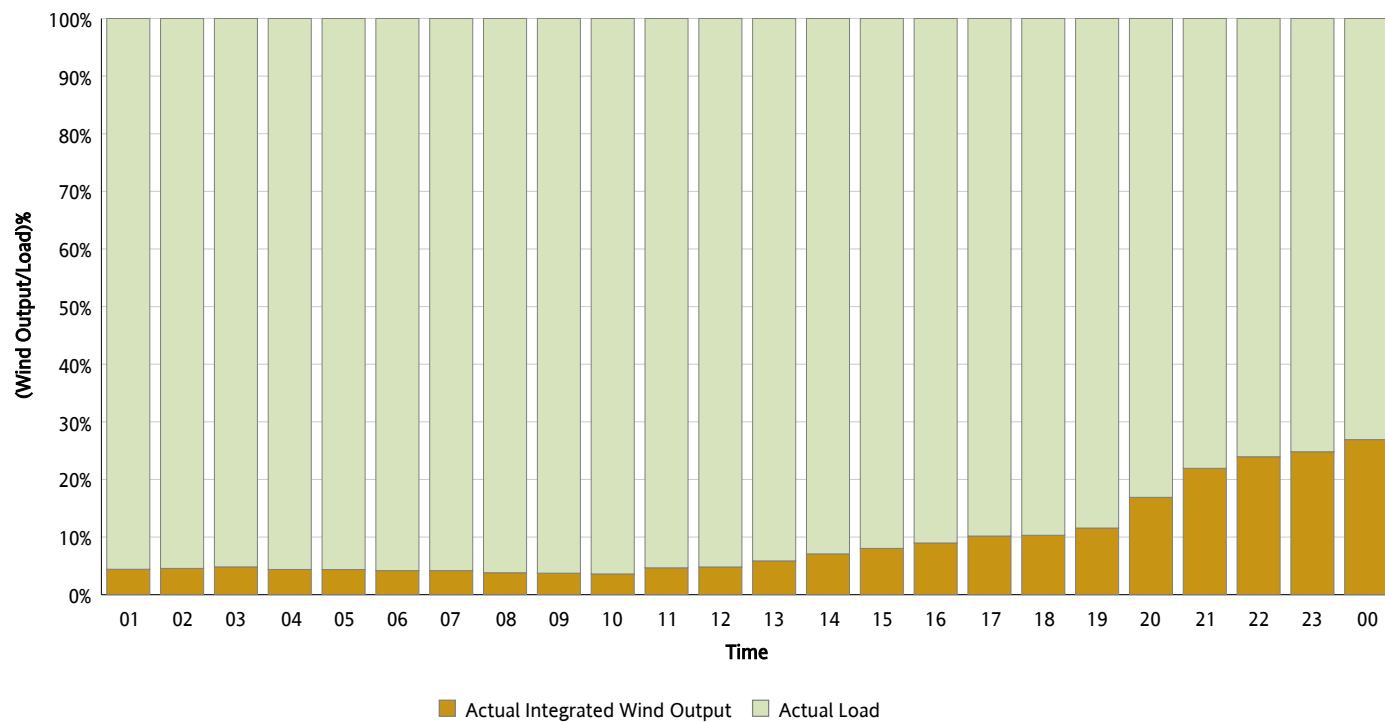
## Actual Wind Output as a Percentage of the Total Installed Wind Capacity

01/26/2013



## Actual Wind Output as a Percentage of the ERCOT Load

01/26/2013



## ERCOT Load vs. Actual Wind Output

01/19/2013 - 01/26/2013

